

3 Gun Stage (East End Rod & Gun Club, 28 May 22)

Note: NOT TO SCALE, layout is approximate

HEAD TO HEAD COMPETITION

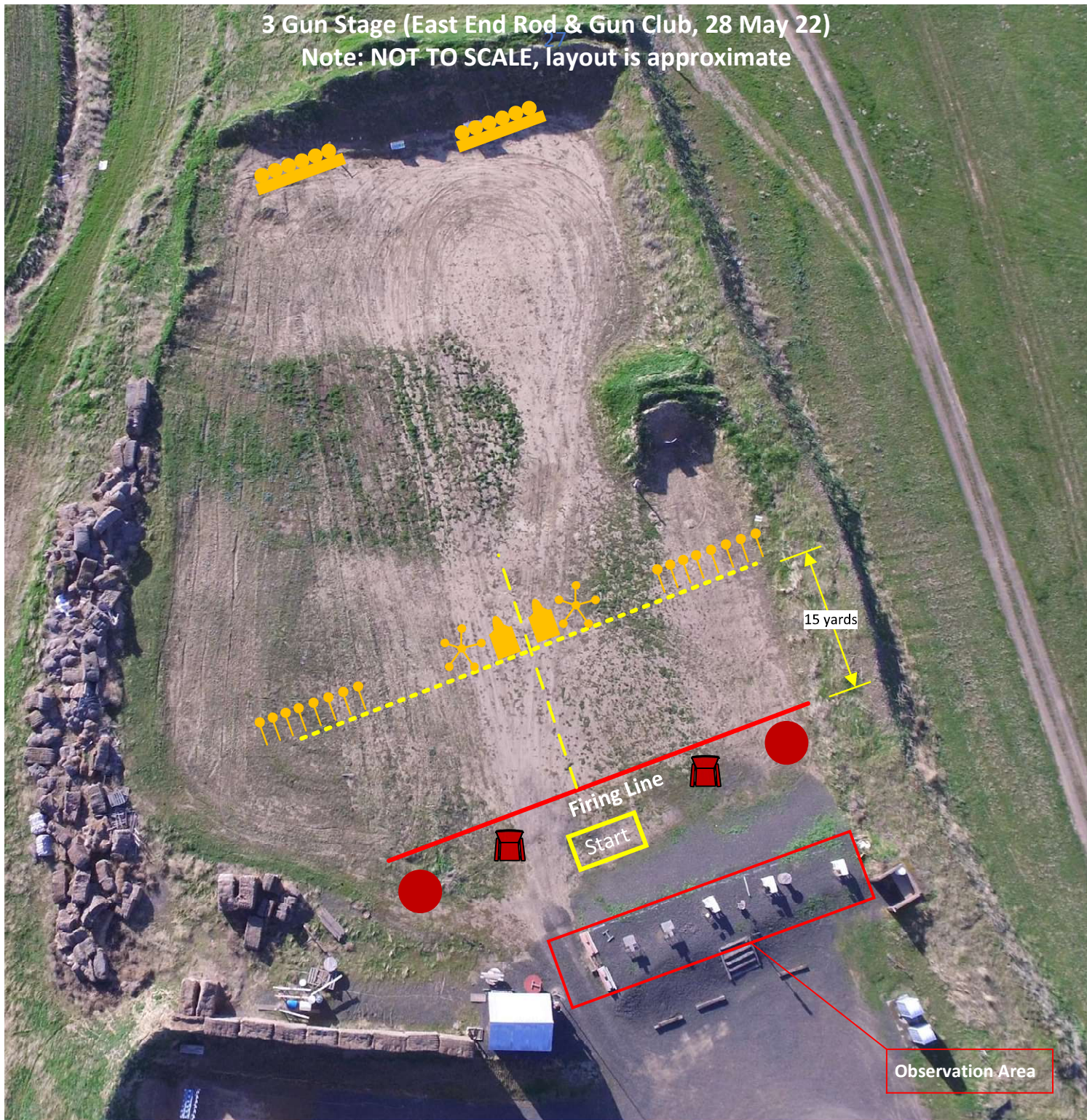
The left and right sides of the stage are mirror images. The start box is in the middle.

There are 8 clay pigeons on the outside, a rifle plate rack at the back berm, a Texas Star, and two falling silhouettes that fall across each other. The silhouette on the bottom wins the round!




- 0730: Set up
- 0830: Registration
- 0900: Safety briefing
- 0930: Match starts

Notes:

- * AK47 (7.62x39) allowed for 3 Gun
- * Gate closes at 0930



Legend

-  Shotgun table
-  Rifle rack
-  Clay pigeon
-  Plate rack
-  Texas Star
-  Falling silhouette